

NEW RETAIL/TRADE DEVELOPMENT

ADJACENT TO THE GALLERIES SHOPPING CENTRE

LCP
part of M'Core

01384
400123



searchlcp.co.uk



NEW RETAIL/TRADE DEVELOPMENT HIGHLIGHTED IN RED

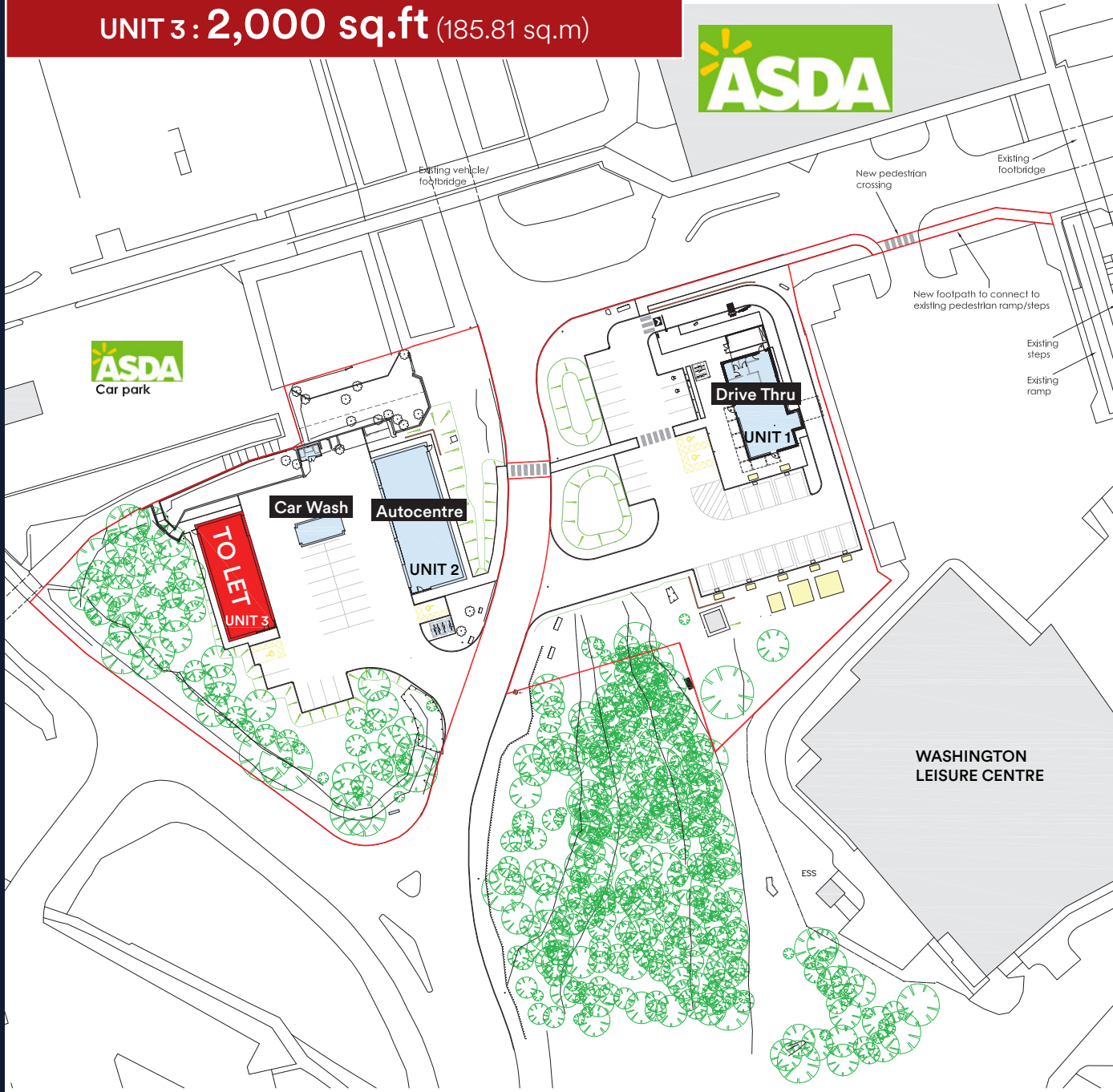


WASHINGTON
LEISURE CENTRE

ASDA

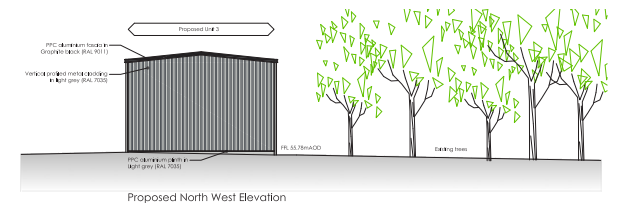
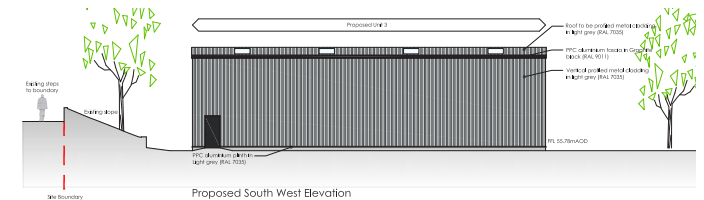
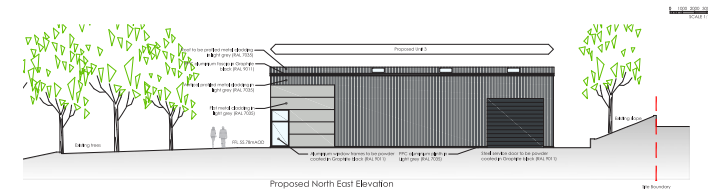
AVAILABLE UNIT TO LET

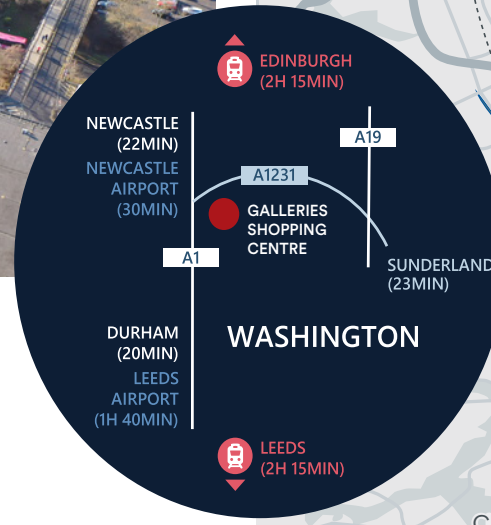
UNIT 3 : 2,000 sq.ft (185.81 sq.m)



The development comprises two prominent sites situated to the North and West of Washington Leisure Centre, and to the South of Asda. A planning application has been submitted (Planning Reference 23/01839/FUL) for a comprehensive redevelopment of both sites to include a drive thru, EV charging hub, tyre and autocare centre, car wash and Class E (a), (e) and (g) uses.

The drive thru, autocare centre, and car wash are under offer. The remaining unit benefits from excellent prominence and associated customer parking, and is suitable for a variety of retail, trade, and service uses (subject to planning).





Location

With great transport links and ample parking, the new retail development is easily accessible being 7 miles west of Sunderland, 11 miles north of Durham and 10 miles south east of Newcastle Upon Tyne. The development is located just off the A1231 and within easy reach of both the A1 and A19 trunk roads.

Contact Details

MISREPRESENTATION ACT 1967 London & Cambridge Properties Limited (Company Number 02895002) the registered office of which is at LCP House, Pensnett Estate, Kingswinford, West Midlands DY6 7NA its subsidiaries (as defined in section 1156 of the Companies Act 2006) associated companies and employees ("we") give notice that: Whilst these particulars are believed to be correct no guarantee or warranty is given, or implied therein, nor do they form any part of a contract. [We do our best to ensure all information in this brochure is accurate. If you find any inaccurate information, please let us know and where appropriate, we will correct it.] We make no representation that information is accurate and up to date or complete. We accept no liability for any loss or damage caused by inaccurate information. [This brochure gives a large amount of [statistical] information and there will inevitably be errors in it]. Intending purchasers or tenants should not rely on the particulars in this brochure as statements or representations of fact but should satisfy themselves by inspection or otherwise as to the correctness of each of them. We provide this brochure free of charge and on the basis of no liability for the information given. In no event shall we be liable to you for any direct or indirect or consequential loss, loss of profit, revenue or goodwill arising from your use of the information contained herein. All terms implied by law are excluded to the fullest extent permitted by law. No person in our employment has any authority to make or give any representation or warranty whatsoever in relation to the property.

SUBJECT TO CONTRACT. We recommend that legal advice is taken on all documentation before entering into a contract. You should be aware that the Code of Practice on Commercial Leases in England and Wales strongly recommends you seek professional advice from a qualified surveyor, solicitor or licensed conveyancer before agreeing or signing a business tenancy agreement. The Code is available through professional institutions and trade associations or through the website: <https://www.rics.org/uk/holding-professional-standards/sector-standards/real-estate/code-for-letting-business-premises-1st-edition/>. LCP's privacy notices that apply to its use of your personal information are at www.lcpgroup.co.uk/policies. The privacy notice that applies to you will depend on the nature of your relationship with LCP, and in some cases more than one may apply to you. LCP's privacy policy giving a high level overview of how LCP approaches data protection and your personal information can be found at www.lcpproperties.co.uk/uploads/files/LCP-Privacy-Web-and-Data-Policy-May-2018.pdf.

mre McMULLEN REAL ESTATE

020 3058 0200
www.mcmullenre.com

RAWSTRON JOHNSON

0113 450 7000
www.rj-ltd.co.uk

Owned and managed by

LCP.
 part of IMCore

01384 400123
searchlcp.co.uk

Mark Crookes
 M: 07831 265072
 E: mcrookes@mcmullenre.com

Adrian Johnson
 M: 07747 610111
 E: adrian@rj-ltd.co.uk

Simon Eatough
 M: 07771 764148
 E: SEatough@lcpproperties.co.uk

Corporate www.lcpgroup.co.uk **Available Property Search** www.lcpproperties.co.uk

twitter.com/LCP_Group linkedin.com/company/lcpgroup

Peter Barker
 M: 07960 978975
 E: pbarker@mcmullenre.com